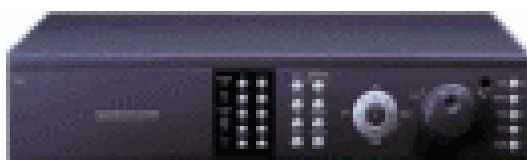




Data Sheet

SG-U824CM



Overview

- Real-time recording & playback.
- Matrix function for controlling multiple DVRs.
- Multi Level User Management support.
- E-map function and 128 channel CMS



Key Features

- Stable Operating System (Linux Embedded)
- MPEG-4 Compression
- Real-time recording & playback support.
- Quadplex mode for simultaneous recording, playback, backup, and transmission.
- Remote viewing, access, and control, backup through the network
- Dynamic IP support (DHCP & PPPoE) and DNS server available
- CMS (Central Monitoring System) supports up to 128 channels
- Monitoring by Internet Explorer
- Alarm Triggered E-mail alert function
- Various Event Notification (Pop-up), Icon, Buzzer, Relay Output)
- NTP (Network Time Protocol) support
- 1-way audio through the network
- Supports various alarm events: Motion detection, External sensors & Video loss detection
- Various backup method support: USB(Ver2.0) CD-RW(400 series only), or DVD-RW(400 series only, Option) and Network
- Audio recording available (up to 16 channels - 4 basic / 8 - 12 optional)



- Multiple recording modes: Time lapse, pre/post alarm, scheduled, sensor, motion, manual, continuous, continuous + event recording
- Pre alarm recording for 5sec and post alarm recording for 60sec
- Convenient search by calendar, event (motion, sensor), Still image
- Support Spot Monitor output (Selectable: 1/4/9/16 (400 series only))
- Multi Level User Management support / Security password protection
- Recording status monitoring (Recording Warning, Recording Fail support)
- SATA HDD support
- RS-232 Interface: Communication with console, quick and easy setup
- Easy software update via USB port, CD-RW(400 series only), or DVD-RW(400 series only, Option) and Network
- IR remote control and Mouse support
- Keyboard controller support (except 4004)
- Matrix function support (408, 408c, 416, 416C only)
- Multi Language support
- Loop through output with auto termination (400 series only)

Specifications

Matrix Series SG-U824CM DVR

MODEL	SG-U824CM
Image System	NTSC PAL selectable
Video Channel	8 Channel Composite, 8 Channel Loop Through, BNC
Video Output	1 Channel Composite BNC, 1 Channel Spot (Single) 1 Channel VGA
Video Compression	MPEG-4
Recording Resolution	720x480, 720x240,360x240(NTSC) 720x576, 720x288, 360x288(PAL)
Recording Quality	4 Levels (Normal, Enhanced, Fine, Super Fine)
Max Display Speed	240fps(NTSC) 200fps(PAL)
Max Recording Speed	240fps at CIF(NTSC)

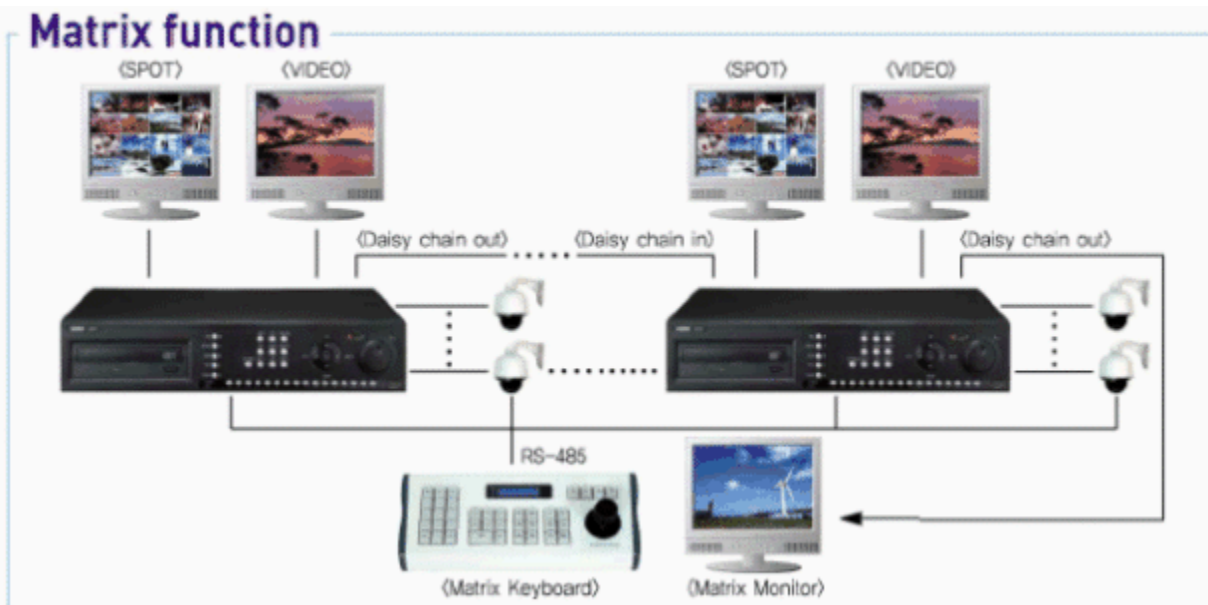
	200fps at CIF(PAL)
Max Playback Speed	240fps at CIF(NTSC) 200fps at CIF(PAL)
Time Laps Recording Interval fps	1,2,3,4,5,6,8,10,15,30(NTSC 10 Steps) 1,2,3,4,5,7,9,13,20,25(PAL 10 Steps)
Recording Mode	Schedule, Event (Sensor, Motion Detection), Manual, Continuous, Continuous + Event
Playback Search	Calendar, Event (Sensor, Motion Detection)
Playback Speed	x1, x2, x4, x8, x16, x32, x64, x128, Field by Field (Forward, Backward)
Slow Motion	x1/4, x1/2 (Forward only)
Sensor Input	8 (N0/NC Selectable)
Alarm Output (Relay)	1 Relay (NO/NC), 4 TTL
Audio In / Out	4 Ch (4Ch Option) In, 1 Channel Out
Network	10/100Base-T(Static, DHCP, PPPoE, E-Mail & FTP), DDNS Server Available
Motion Detection	22x15 (NTSC), 22x18 (PAL), 8 Level Sensitivity
Jog/Shuttle	0
Hard Disk	Max. 2EA
Backup	USB (Ver2.0), CD-RW, DVD-RW (option), Network
Keyboard Control	0 (Except Matrix Key)
Daisy Chain Out	0
Watermarking	Still Image Backup
PTZ Control	RS-485
Serial Port	RS-232
System Log	Video Loss, Power On/Off, HDD Full, REC Warning, REC Fail, Menu Called, Reset HDD Format, Reset SW Upgrade, Email Fail
Language	Korean, English, Japanese, French, Spanish, German,

	Polish, Italian, Russian, Slovak, Turkish, Czech
S/W Upgrade	Network, USB Memory Stick, CD-RW
Password Function	Power OFF, MENU, Record OFF, Key Lock
Power Source	Free Voltage (100-240VAC, 50Hz/60Hz), 70W
Dimensions	433mm (W) X 385mm (D) X 88mm (H)
Operating Temperature	-5°C~40°C
Weight	7Kg (net) / 8Kg (gross)

* Prices & Specifications are subject to change without notice.



System Integration



CMS

- Up to 128 channel
- Audio for playback and live
- Playback & backup from remote DVR
- PTZ control
- Remote DVR set up
- Group Management
- Alarm event



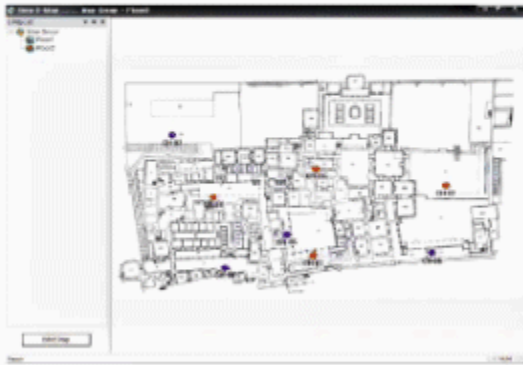
<128CH Multiviewer>



<RAMS>

E-map function(UniMap)

- Indicate camera location in the map
- Shows DVRs recording and event status in real time.



Operation

PDA Viewer

- Real time live view
- PTZ control is available

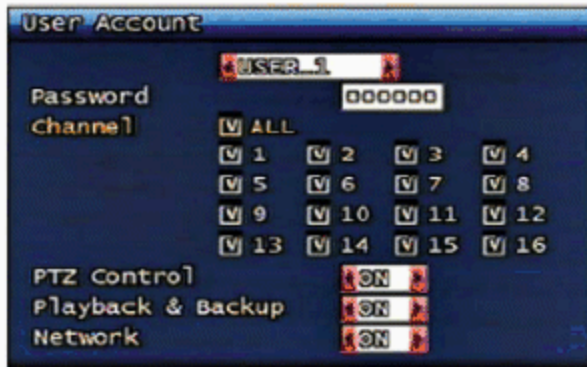


Backup



Multi level user management

- Maximum 6 users (ADMIN, USER 1~5)
- Restriction for channel, PTZ control, Playback & Backup and Network



(Authorization for User 1)



(Authorization for RAMS)



Features

Various Video output



Strong event



User convenience

