



## Data Sheet

### SG-U1624CM



#### Overview

- Real-time recording & playback.
- Matrix function for controlling multiple DVRs.
- Multi Level User Management support.
- E-map function and 128 channel CMS



#### Key Features

- Stable Operating System (Linux Embedded)
- MPEG-4 Compression
- Real-time recording & playback support.
- Quadplex mode for simultaneous recording, playback, backup, and transmission.
- Remote viewing, access, and control, backup through the network
- Dynamic IP support (DHCP & PPPoE) and DNS server available
- CMS (Central Monitoring System) supports up to 128 channels
- Monitoring by Internet Explorer
- Alarm Triggered E-mail alert function
- Various Event Notification (Pop-up), Icon, Buzzer, Relay Output)
- NTP (Network Time Protocol) support
- 1-way audio through the network
- Supports various alarm events: Motion detection, External sensors & Video loss detection
- Various backup method support: USB(Ver2.0) CD-RW(400 series only), or DVD-RW(400 series only, Option) and Network
- Audio recording available (up to 16 channels - 4 basic / 8 - 12 optional)
- Multiple recording modes: Time lapse, pre/post alarm, scheduled, sensor, motion, manual, continuous, continuous + event recording
- Pre alarm recording for 5sec and post alarm recording for 60sec
- Convenient search by calendar, event (motion, sensor), Still image
- Support Spot Monitor output (Selectable: 1/4/9/16)



- (400 series only)
- Multi Level User Management support / Security password protection
- Recording status monitoring (Recording Warning, Recording Fail support)
- SATA HDD support
- RS-232 Interface: Communication with console, quick and easy setup
- Easy software update via USB port, CD-RW(400 series only), or DVD-RW(400 series only, Option) and Network
- IR remote control and Mouse support
- Keyboard controller support (except 4004)
- Matrix function support (408, 408c, 416, 416C only)
- Multi Language support
- Loop through output with auto termination (400 series only)



## Specifications

## SG-U1624CM DVR

<b>MODEL</b>	<b>SG-U1624CM</b>
<b>Image System</b>	<b>NTSC PAL selectable</b>
<b>Video Channel</b>	<b>16 Channel Composite, 16 Channel Loop Through, BNC</b>
<b>Video Output</b>	<b>1 Channel Composite BNC, 1 Channel Spot (Single) 1 Channel VGA</b>
<b>Video Compression</b>	<b>MPEG-4</b>
<b>Recording Resolution</b>	<b>720x480, 720x240,360x240(NTSC) 720x576, 720x288, 360x288(PAL)</b>
<b>Recording Quality</b>	<b>4 Levels (Normal, Enhanced, Fine, Super Fine)</b>
<b>Max Display Speed</b>	<b>480fps(NTSC) 400fps(PAL)</b>
<b>Max Recording Speed</b>	<b>240fps at CIF(NTSC) 200fps at CIF(PAL)</b>
<b>Max Playback Speed</b>	<b>240fps at CIF(NTSC) 200fps at CIF(PAL)</b>
<b>Time Laps Recording Interval fps</b>	<b>1,2,3,4,5,6,8,10,15,30(NTSC 10 Steps) 1,2,3,4,5,7,9,13,20,25(PAL 10 Steps)</b>
<b>Recording Mode</b>	<b>Schedule, Event (Sensor, Motion Detection), Manual, Continuous, Continuous + Event</b>

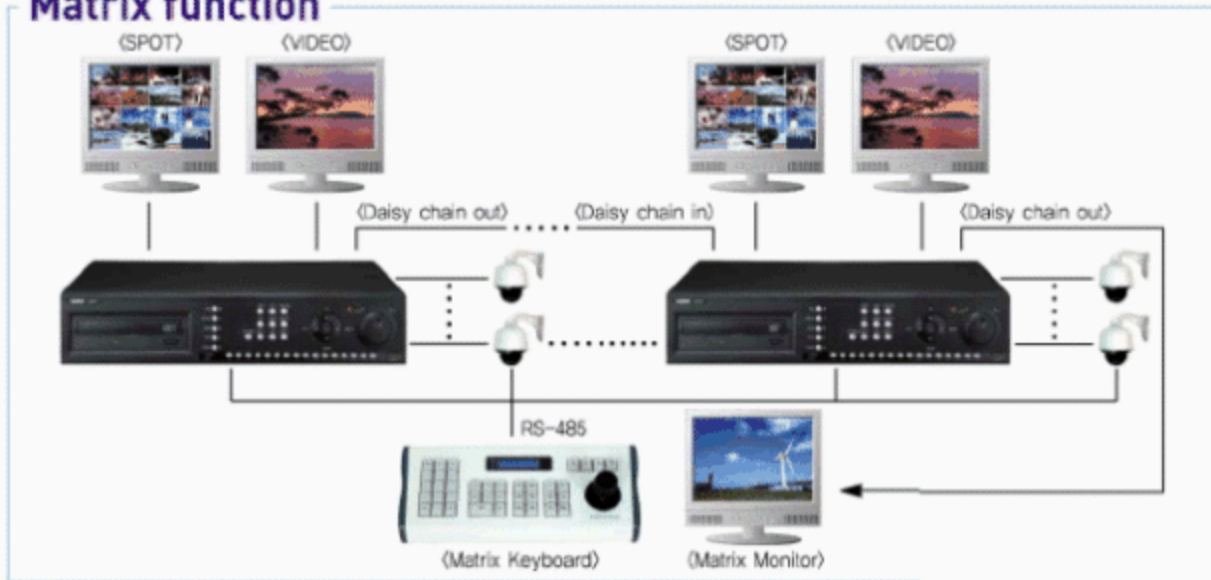
<b>Playback Search</b>	<b>Calendar, Event (Sensor, Motion Detection)</b>
<b>Playback Speed</b>	<b>x1, x2, x4, x8, x16, x32, x64, x128, Field by Field (Forward, Backward)</b>
<b>Slow Motion</b>	<b>x1/4, x1/2 (Forward only)</b>
<b>Sensor Input</b>	<b>16 (NO/NC Selectable)</b>
<b>Alarm Output (Relay)</b>	<b>1 Relay (NO/NC), 4 TTL</b>
<b>Audio In / Out</b>	<b>4 Ch (12Ch Option) In, 1 Channel Out</b>
<b>Network</b>	<b>10/100Base-T(Static, DHCP, PPPoE, E-Mail &amp; FTP), DDNS Server Available</b>
<b>Motion Detection</b>	<b>22x15 (NTSC), 22x18 (PAL), 8 Level Sensitivity</b>
<b>Jog/Shuttle</b>	<b>0</b>
<b>Hard Disk</b>	<b>Max. 2EA</b>
<b>Backup</b>	<b>USB (Ver2.0), CD-RW, DVD-RW (option), Network</b>
<b>Keyboard Control</b>	<b>0</b>
<b>Daisy Chain Out</b>	<b>0</b>
<b>Watermarking</b>	<b>Still Image Backup</b>
<b>PTZ Control</b>	<b>RS-485</b>
<b>Serial Port</b>	<b>RS-232</b>
<b>System Log</b>	<b>Video Loss, Power On/Off, HDD Full, REC Warning, REC Fail, Menu Called, Reset HDD Format, Reset SW Upgrade, Email Fail</b>
<b>Language</b>	<b>Korean, English, Japanese, French, Spanish, German, Polish, Italian, Russian, Slovak, Turkish, Czech</b>
<b>S/W Upgrade</b>	<b>Network, USB Memory Stick, CD-RW</b>
<b>Password Function</b>	<b>Power OFF, MENU, Record OFF, Key Lock</b>
<b>Power Source</b>	<b>Free Voltage (100-240VAC, 50Hz/60Hz), 70W</b>
<b>Dimensions</b>	<b>433mm (W) X 385mm (D) X 88mm (H)</b>
<b>Operating Temperature</b>	<b>-5°C~40°C</b>
<b>Weight</b>	<b>7Kg (net) / 8Kg (gross)</b>

\* Prices & Specifications are subject to change without notice.



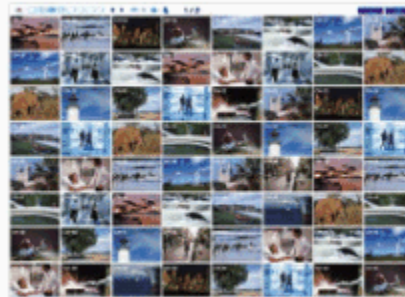
# System Integration

## Matrix function



## CMS

- Up to 128 channel
- Audio for playback and live
- Playback & backup from remote DVR
- PTZ control
- Remote DVR set up
- Group Management
- Alarm event



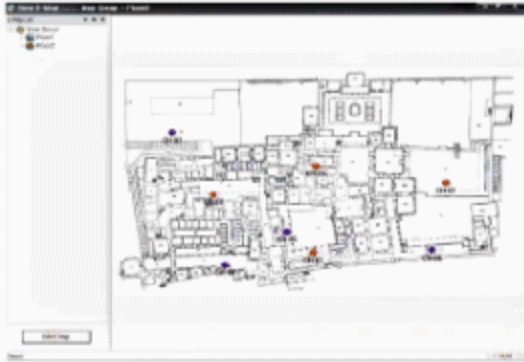
<128CH Multiviewer>



<RAMS>

## E-map function(UniMap)

- Indicate camera location in the map
- Shows DVRs recording and event status in real time.



Operation

## PDA Viewer

- Real time live view
- PTZ control is available

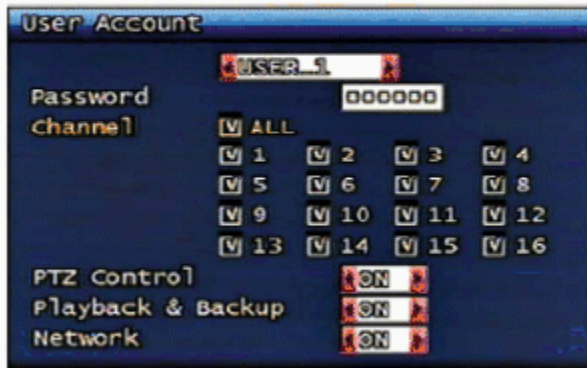


## Backup



## Multi level user management

- Maximum 6 users (ADMIN, USER 1~5)
- Restriction for channel, PTZ control, Playback & Backup and Network



(Authorization for User 1)



(Authorization for RAMS)



## Features

## Various Video output



## Strong event



## User convenience

